



License Service Setup Guide

Summary

Guide

GU0103 (v1.1) March 23, 2005

This guide gives an overview of installing and setting up an Altium Designer Network License configuration.

The Network License allows multiple instances of Altium Designer, to be licensed from a central Network License Server. Refer to the Altium End User License Agreement (EULA) for the definition and scope of the network.

To install an Altium Designer Network License on your company's network, first install and configure the Network License Server, then install the Altium Designer product on each of the end-user's computers (the Clients).

Two codes are supplied with the Network License Server software – a Customer Number and an 8 character Activation Code. Keep both of these in a secure location, you may be required to quote the Customer Number whenever you contact your Altium representative and you will need both codes when you install the License Server.

Installing and Setting up the Network License Server

Installing the Software


The Network License Server is a separate and distinct installation. It is installed on the target machine as a Windows Service. To run the associated setup wizard for the install, exit the current installation Wizard for the Altium Designer product on the software CD (which runs automatically) and navigate to and click on, the `Setup.exe` file in the `\Network License Setup\Setup` folder. The *Network License Service Setup* Wizard will appear (Figure 1). Follow the instructions on the pages of the Wizard to install the software.

Note: If you are installing the Network Server software on the same machine as your Altium Designer product software, it is recommended that you install to the same location.



Figure 1. The Network License Service Setup Wizard.

Stopping and Starting the Network License Server Software

The Network License Server software is installed on your computer as a Windows Service. Upon completion of the installation, the software (service) will be running and an icon will appear in the Windows System Tray – .

The right-click menu associated to this icon allows you to pause or stop and exit the service. To start the service again, from the Windows Control Panel, double-click on the **Administrative Tools** entry, and then double-click on the **Services** entry. The *Services* console will appear. Locate and click on the entry *Altium Designer Network License Service* – the Stop, Pause and Restart controls will become accessible (Figure 2).

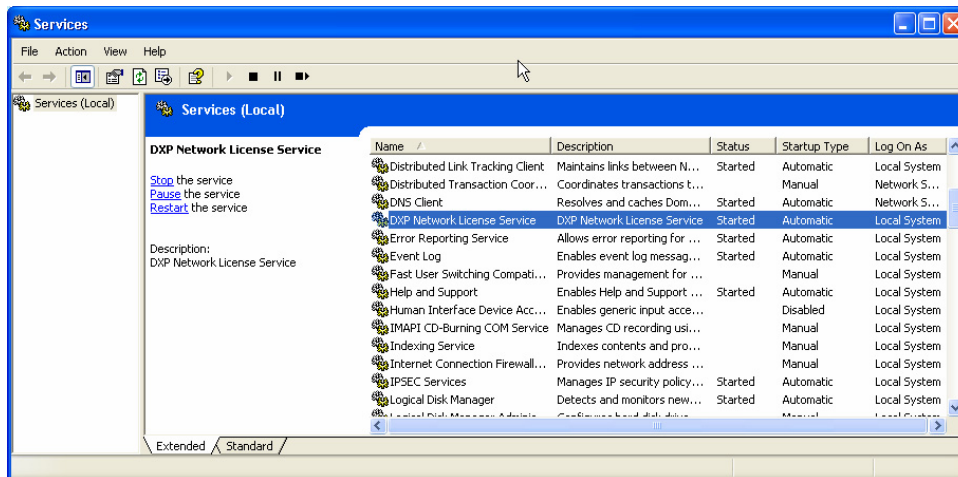


Figure 2. Accessing the controls for the Altium Designer Security Service.

Initial Configuration

Configuration of the Network License Server is carried out from the *Network License Service* dialog. This dialog is accessed either by double-clicking on the icon in the Windows System Tray, or by right-clicking on it and choosing **Settings** from the pop-up menu that appears.

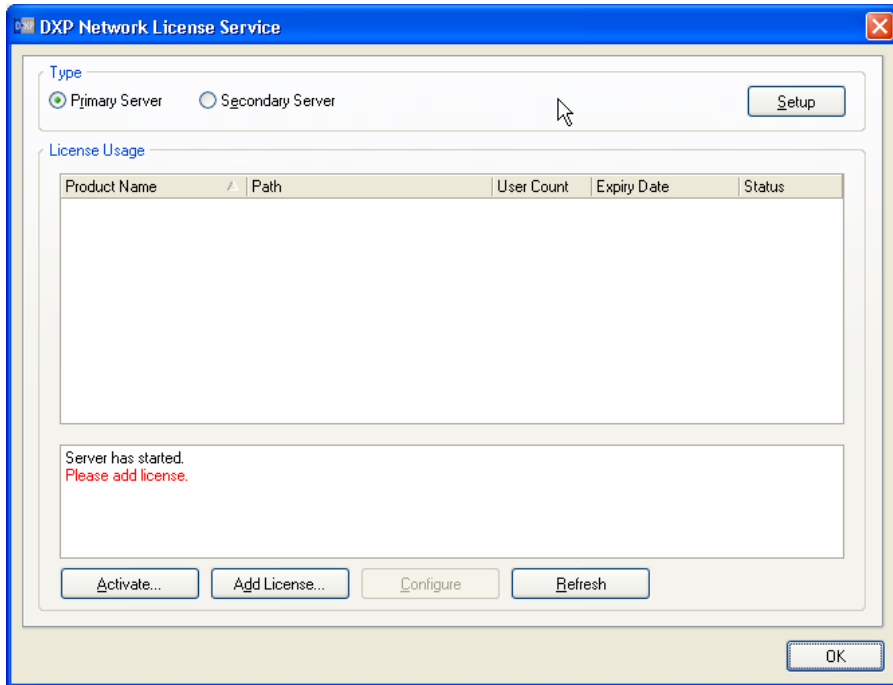


Figure 3. Network Server setup from within the Network License Service dialog.

With the **Primary Server** option enabled (default), click on the **Setup** button to access the *Primary Server Setup* dialog (Figure 4).

Enter the **Port Number** (leave at the default if you are unsure). The **Secondary Server** can be configured later. Click **OK** to close the dialog and proceed.

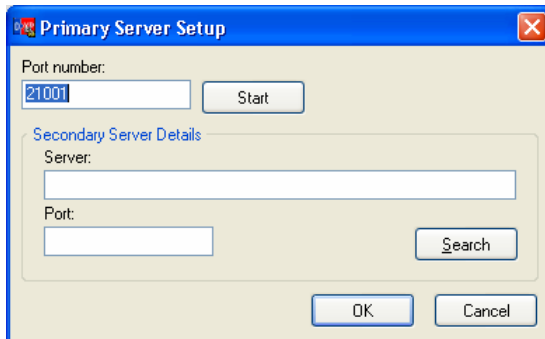


Figure 4. Setting up the Primary Network Server.

Activating the Network License Server Software

To configure the Network Server, you need to first add a valid Network License file. To obtain the required Network License file, the software license must first be activated. To do this, click on the **Activate** button, at the bottom left of the *Network License Service* dialog – the *Network Service Activation* dialog will appear (Figure 5).

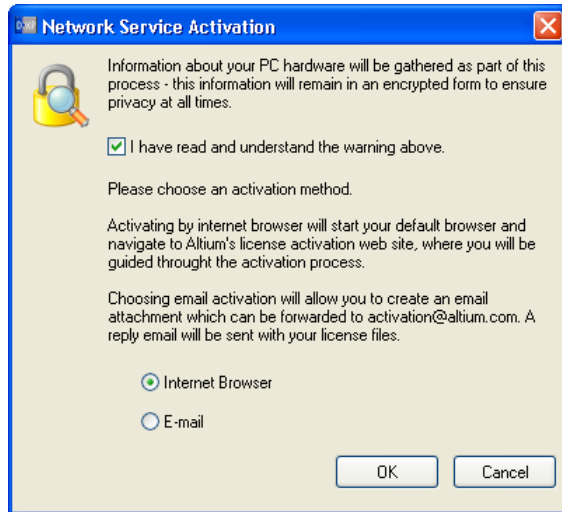


Figure 5. Activation of the Network Server software.

Activation can be carried out either directly over the internet, or through e-mail. As part of the activation process, information will be gathered relating to the hardware in your computer. This information will remain in an encrypted form at all times, thus ensuring privacy.

Activation over the Internet

With the **Internet Browser** option enabled in the *Network Service Activation* dialog, clicking **OK** will open your default web browser and navigate to Altium's License Activation Wizard (Figure 6).

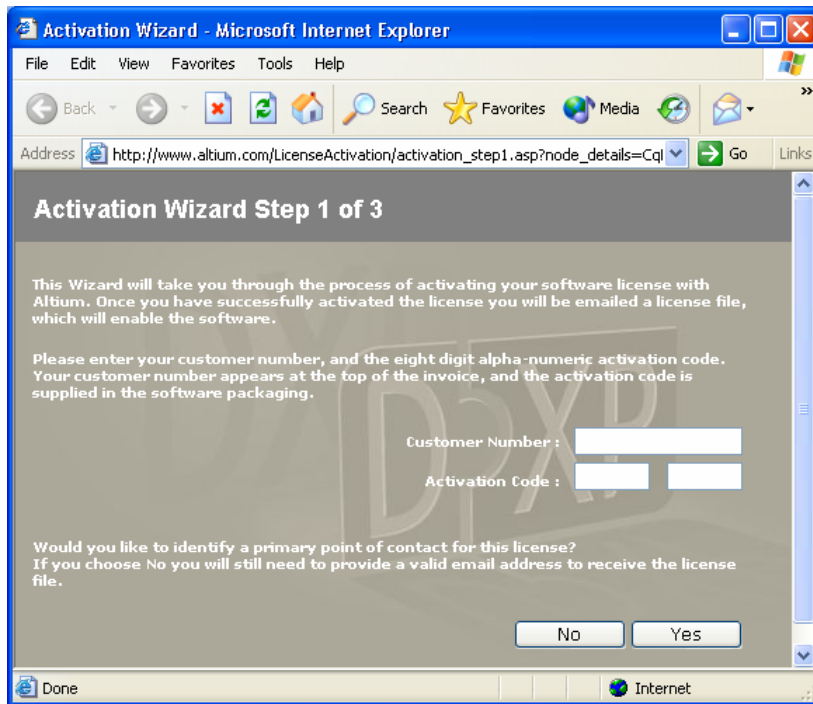


Figure 6. Activation over the Internet.

Follow the instructions on the pages of the Wizard in order to activate the software and obtain a license file.

Enter the **Customer number** and **Activation Code** in the corresponding fields on the first page of the Wizard. The Customer number appears at the top of your invoice for the software. The Activation Code is supplied in the software packaging.

When you have reached the end of the Wizard, click on the **Finish** button. If activation is successful, an e-mail containing the license file will be mailed to the e-mail address you entered on page two of the Wizard.

Activation via E-mail

With the **E-mail** option enabled in the *Network Service Activation* dialog, clicking **OK** will open the *E-mail Activation* dialog (Figure 7).

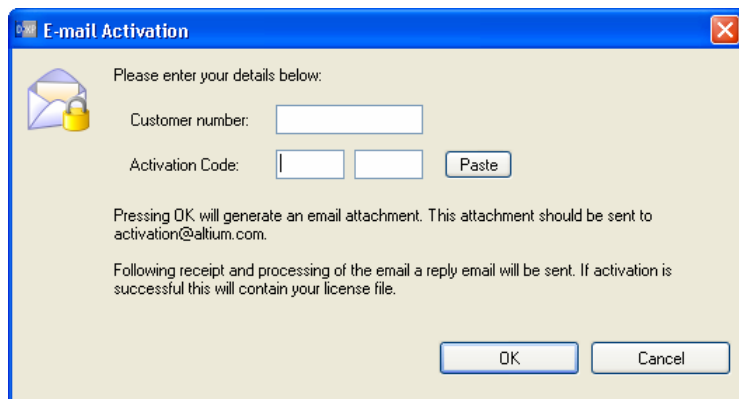


Figure 7. Activation of the software via e-mail.

Enter the **Customer number** and **Activation Code** in the corresponding fields in the dialog. The Customer number appears at the top of your invoice for the software. The Activation Code is supplied in the software packaging.

Clicking **OK** will generate a text file containing details of the hardware on your computer, in a secure, encrypted form. A dialog will appear enabling you to define where and by what name, this file is generated.

Simply mail this file as an attachment to activation@altium.com. The file will be processed and, providing activation is successful, you will receive an email containing the license file.

Adding the License

Once the software has been activated and you have received the required network license file, you must now add that license file – essentially specifying to the software the location of the file and therefore completing the process of enabling the software.

To add a license, from the *Network License Service* dialog click the **Add License** button. The *Open* dialog will appear, from where you can browse to and open the Altium License File (*.alif) that you received after activation.

Note: You must have first saved the license file attachment in the e-mail received after activation. If you save this file to the same location as that specified when installing the Network License Server software, this location will be checked initially when the *Open* dialog is first launched.

Once the required license file has been located, click the **Open** button to open the file and close the dialog. The Network license will be added to the **License Usage** region of the *Network License Service* dialog (Figure 8). As well as the name and path, information about the license's User Count, Expiry Date and Status is also displayed.

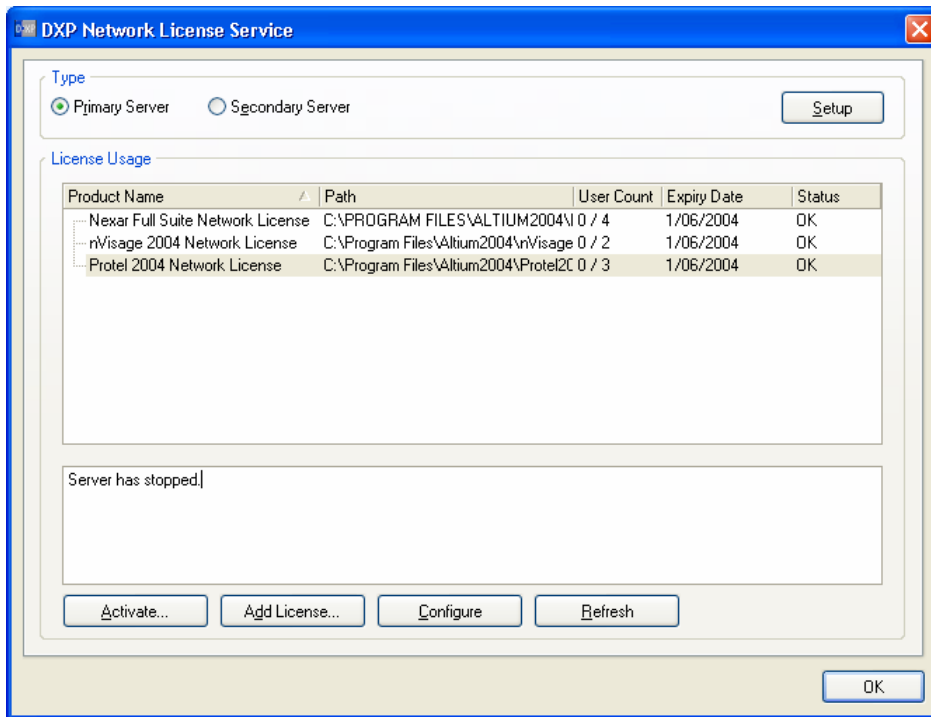


Figure 8. Addition of Network Licenses.

Setting up the Users

All Network License Server configuration – such as adding Users, creating Groups and assigning Users to Groups is done in the *Security* dialog (Figure 9).

Configuration is carried out on a license-by-license basis. In the example of Figure 8 (previous), three different Network Licenses have been added. Each license is configured in turn, by selecting its entry in the **License Usage** area of the *Network License Service* dialog and clicking the **Configure** button¹.

Note: It is recommended that you shut down and restart the Network License Service whenever you add Users or change the Group configurations.

¹ The **Configure** button will only become available once a valid License file has been added.

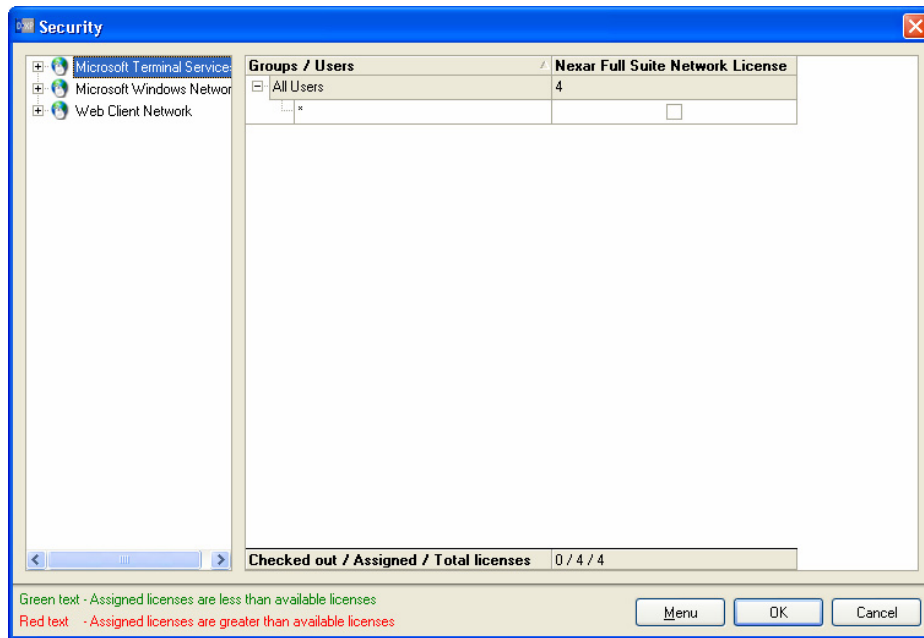


Figure 9. Defining Network License usage – Security dialog.

By default there is a single group called **All Users**, with one user added. The User name is set to the wildcard character (*), which means any user on the network is a valid member of this group. If you intend to control which users have access, or to assign your users to Groups, remove this user.

Adding New Users

A User is a computer name on your network. There are two different methods available in the dialog for adding users – Manual or Search.

Adding a New User Manually

This is the direct method of user addition. Simply right-click within the right hand region of the *Security* dialog and choose **Add New User** from the subsequent pop-up menu that appears. The *Add User* dialog will appear, from where you can type directly the name of the user (computer) to be added (Figure 10).

Note: Unless a specific Group has previously been defined (see the section Creating Groups) and that Group is selected in the *Security* dialog before launching the *Add User* dialog, the new user will be added to the **All Users** section.

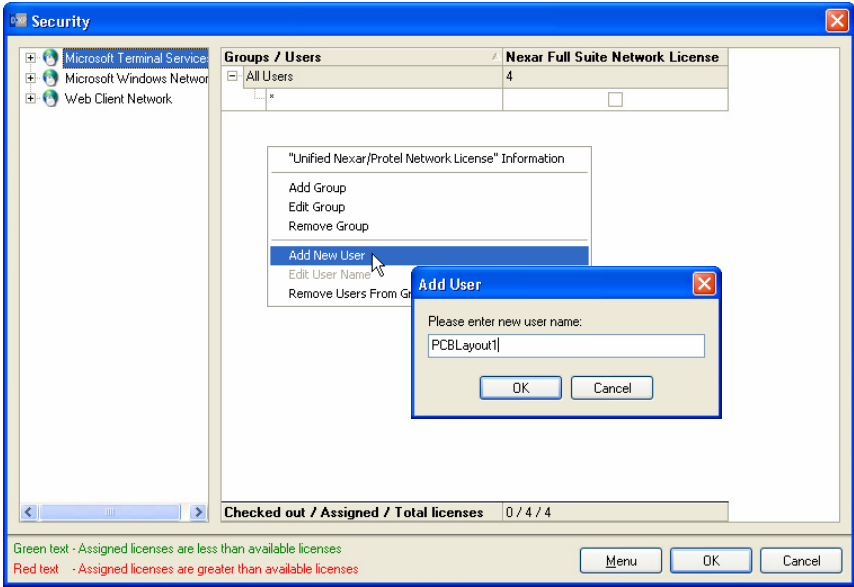


Figure 10. Manual addition of a new User.

Each new user will appear as a distinct row entry, with an empty checkbox appearing under the column for the Network License that is currently being configured. This checkbox is used to monitor/report whether the user is currently using an instance of the available license.

Groups / Users		Nexar Full Suite Network License
All Users	4	
x		<input type="checkbox"/>
FPGADesign1		<input type="checkbox"/>

Figure 11. New User entry within the Security dialog.

Adding a New User via Search

The left hand region of the Security dialog provides a listing of all detected local area networks. Simply expand the relevant network to which the required users are connected and search for their particular computer names. Once found, simply drag and drop into the respective group in the right hand side of the dialog (if defined) or into the **All Users** section.

Note: Standard multi-select features (**CTRL**+click and **SHIFT**+click) can be used to assign multiple new users at once.

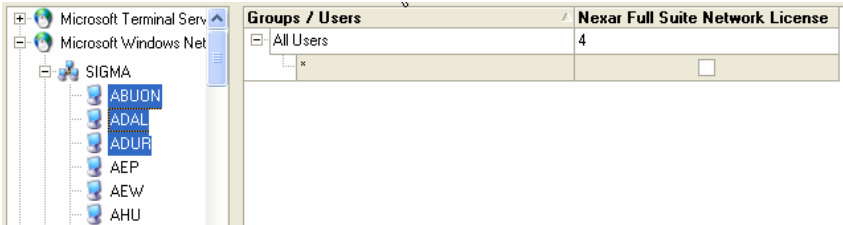


Figure 12. Adding Users by searching the network.

Creating Groups

Dividing your users into Groups is an optional feature. It allows you to divide the total pool of licenses into smaller sets. Typically you would create Groups to ensure that there is always a suitable number of licenses available in the various departments that are using the software. You can also ensure that specific users always have access to the software by including them in a Group that has the same number of licenses allocated as the number of users in that Group.

To create a new Group, simply right-click anywhere within the right hand region of the *Security* dialog and choose **Add Group** from the menu that appears. The *Add Group* dialog will open, from where you can define the name for the new Group (Figure 13).

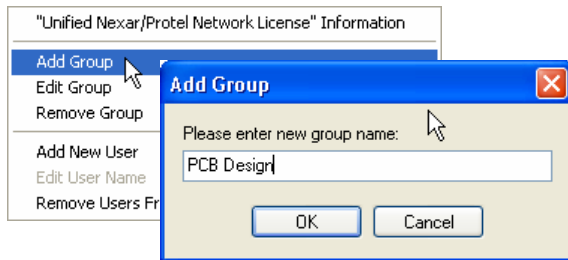


Figure 13. Adding a new Group to the Network License Server configuration.

Assigning a User to a Group

A user can be assigned to a Group in one of the following ways:

- Right-click on the Group entry in the right hand side of the *Security* dialog and choose **Add New User** from the subsequent menu
- Search for the required user in the left hand side of the *Security* dialog and drag and drop onto the Group name entry in the right hand side of the dialog
- Drag and drop the required user from the **All Users** section or another Group, into the required Group.

Note: For methods two and three in the list, multiple users can be moved into or between Groups by using the multi-select features (**CTRL**+click and **SHIFT**+click).

Allocating Allowed Number of Users to each Group

For each distinct Network License that is configured, license summary information is displayed at the bottom of the License's column entry:

Checked out / Assigned / Total licenses	0 / 1 / 1
--	-----------

The information given can be summarized as follows:

- Checked out licenses** - the number of licenses that are currently being used by Users
- Assigned licenses** - the number of licenses that have been assigned over the various Groups (where they exist)
- Total licenses** - the total number of simultaneous Users allowed for the current Network License

Once the users have been assigned to their respective Group(s), the next step is to enter the number of simultaneous users allowed for each Group. This is done by entering a number adjacent to each Group name. In the example of Figure 14, the total number of licenses (simultaneous users) is 4. Of this 4, the Communications and Embedded Engineering Groups can have a single user each and the FPGA Design Group can have a maximum number of 2 simultaneous users.

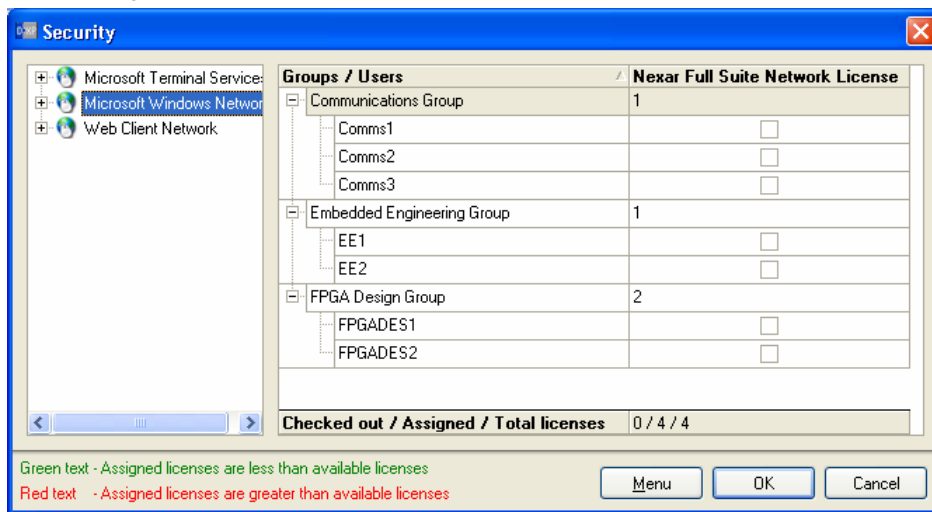


Figure 14. Assigning licenses to user groups.

If the number of Assigned licenses is greater than the Total licenses available, the summary information will be displayed in Red. If the number of Assigned licenses is less than the Total licenses available, the summary information will be displayed in Green.

Adding a Secondary (redundant) License Server

The Network License Service supports setting up a redundant Secondary license server. This server does not respond to a license request from a Client unless the Primary server is no longer available on the network.

To configure the target computer as the Secondary server, ensure that the **Secondary Server** option is enabled in the **Type** region of the *Network License Service* dialog. Clicking on the **Setup** button in the dialog will open the *Secondary Server Setup* dialog (Figure 15).

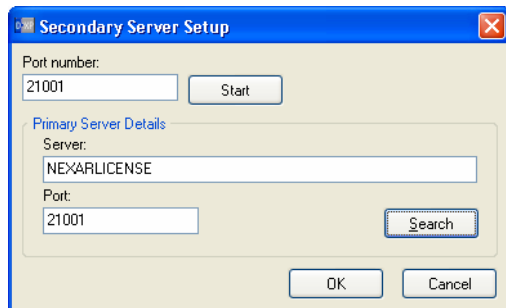


Figure 15. Setting up the Secondary server.

License Service Setup Guide

The Secondary server needs to recognize the Primary server. Clicking the **Search** button in the *Secondary Server Setup* dialog will open the *Primary Server Search* dialog.

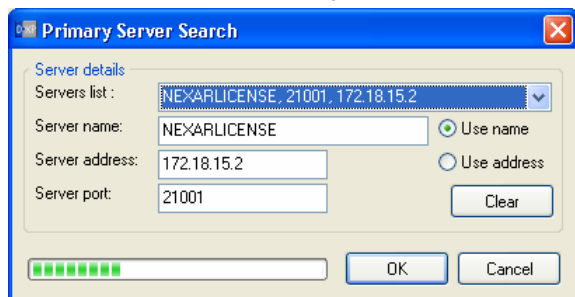


Figure 16. Searching the network for Primary servers.

A search is conducted for all Primary servers on the network. When the required Primary server has been located, click the **OK** button. The server name and port details will be added to the corresponding fields in the **Primary Server Details** region of the *Secondary Server Setup* dialog.

The Secondary server is configured in the same way as the Primary server. Its configuration – i.e. added Network Licenses, Users, Groups and License instance assignments – must be identical to that of the Primary server.

Once the Secondary server is available on the network, return to the Primary License Server and configure it to recognize the Secondary Server. To do this first open the *Network License Service* dialog, then click **Setup**. Click the **Search** button in the *Primary Server Setup* dialog – the *Secondary Server Search* dialog will appear. When the Server has been located click the **OK** button.

Adding additional Altium Designer Products

A single Network License Server can be used to license multiple Altium Designer products. Additional products are added by adding the relevant Network License file² for the new product to the configuration for the server, in the *Network License Service* dialog.

When assigning instances of the license to users, use the Groups feature to control which users have access to one or multiple products. This is simply achieved by adding the same Group and User when configuring Network Licenses for different products. Figure 17 demonstrates this situation. The user **FPGADES2** in the **FPGA Design Group** has been added in the assignment configuration for both the Nexar and Protel products. Looking closely at the assignments made, this user is always guaranteed access to both products.

² Remember that the software license must be activated in order to obtain the Network License file to be added.

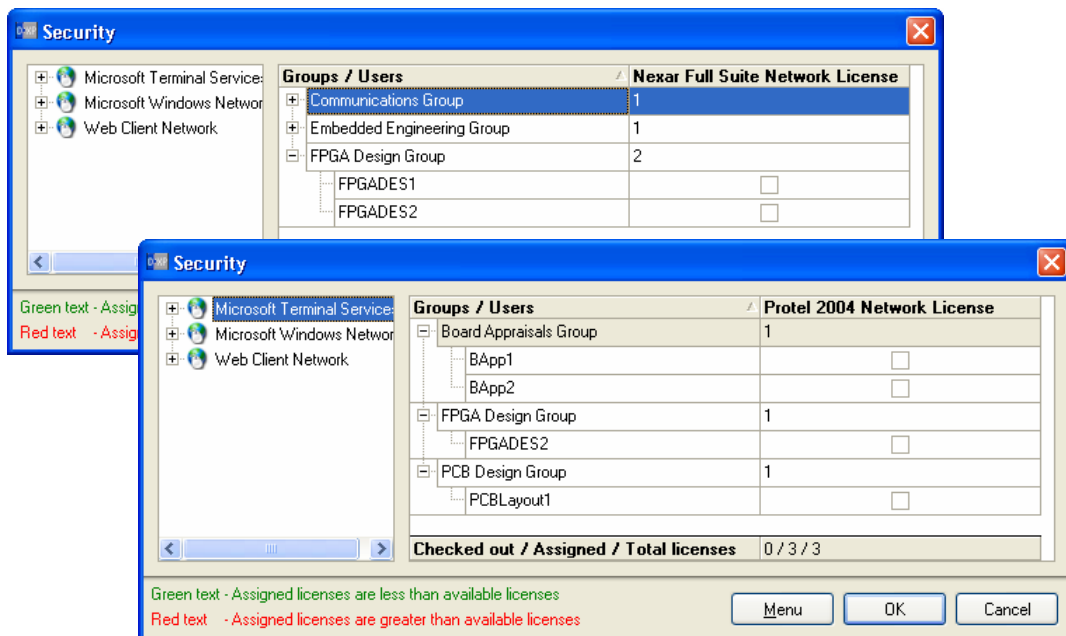


Figure 17. Controlling user access to multiple licensed products.

If a user has access to multiple products they will be prompted to select a product license when they open a document kind that is licensed by both products. Once a user has selected a license, they retain the use of that license until they shut down Altium Designer.

Examining the License Usage

The current license usage can be checked in the *Network License Service* dialog. In the **License Usage** section of the dialog, select the product of interest, then click the + symbol to display a list of users currently using a license. The **User Count** field gives a summary of how many of the available licenses are currently being used.

You can also examine the current license usage in the *Security* dialog. Those users currently using an instance of the license will have a tick displayed in their associated check box.

Installing and Setting up the Client Software

Installing the Software

To install the Altium Designer Client on the network, simply run the standard Altium Designer product installation.

Setting up the Client

Once the installation is complete, launch Altium Designer. The application will open with the **License Management** view active in the main design window (Figure 18).

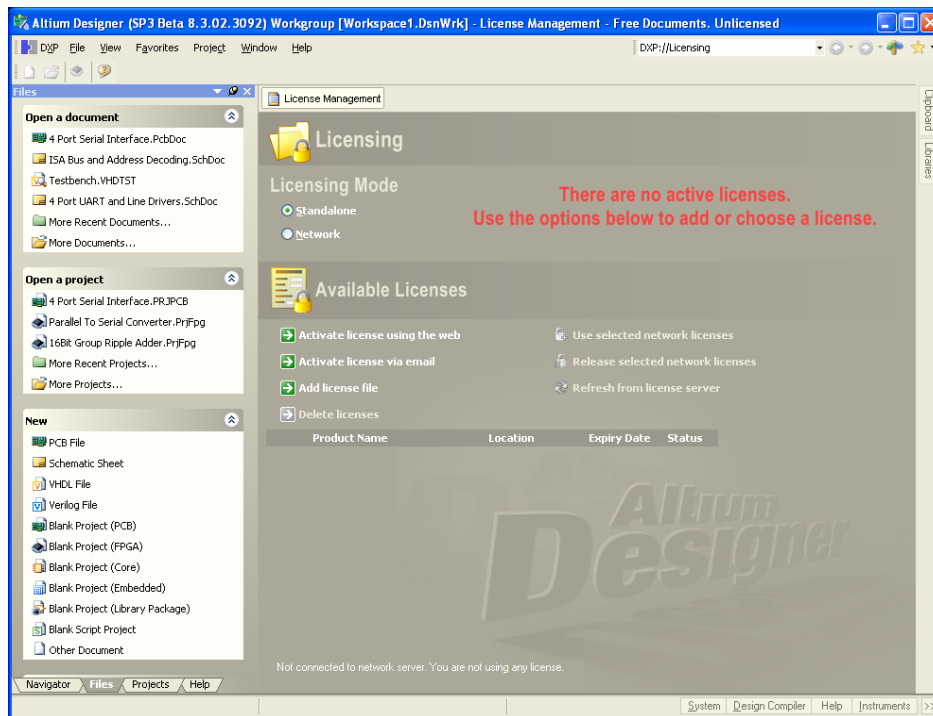
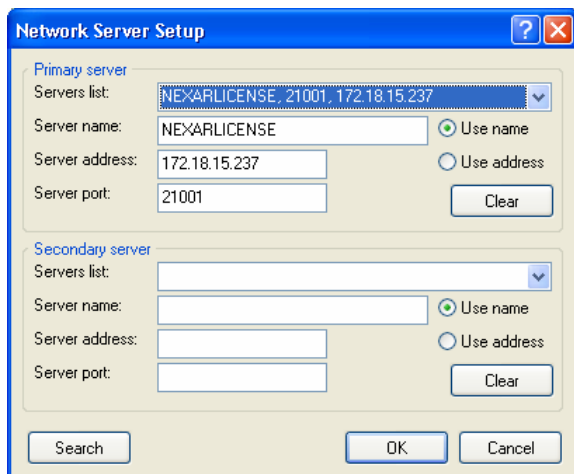


Figure 18. License Management.

In the **Licensing Mode** region of the view, enable the **Network** option, then click **Yes** in the *Confirm* dialog to proceed to the *Network Server Setup* dialog.

A search for both a Primary and a Secondary server is carried out automatically and the details entered into the *Network Server Setup* dialog. The **OK** button can be clicked as soon as the Primary server has been located and its details appear in the dialog.



Network Server Setup

Primary server

Servers list: NEXARLICENSE, 21001, 172.18.15.237

Server name: NEXARLICENSE ☒ Use name

Server address: 172.18.15.237 ☐ Use address

Server port: 21001

Secondary server

Servers list:

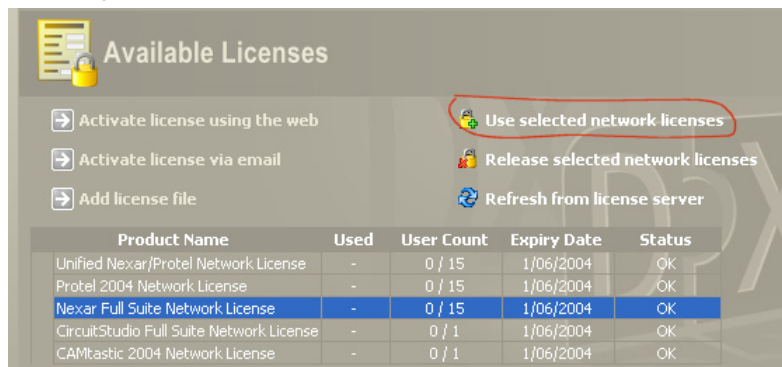
Server name: ☒ Use name

Server address: ☐ Use address

Server port:

Figure 19. Searching for a Network License server on the network.

The Network Licenses configured on the server will appear listed in the **Available Licenses** region of the view. Simply click to highlight the license for the product you wish to use. Multiple product licenses can be selected using the standard **CTRL+click** and **SHIFT+click** features. Once you have chosen the licenses you wish to use, click on the **Use selected network licenses** link.



Available Licenses

Product Name	Used	User Count	Expiry Date	Status
Unified Nexar/Protel Network License	-	0 / 15	1/06/2004	OK
Protel 2004 Network License	-	0 / 15	1/06/2004	OK
Nexar Full Suite Network License	-	0 / 15	1/06/2004	OK
CircuitStudio Full Suite Network License	-	0 / 1	1/06/2004	OK
CAMtastic 2004 Network License	-	0 / 1	1/06/2004	OK

Figure 20. Choosing a product license to use.

To discontinue use of a particular license, click on the **Release selected network licenses** link. This will free-up the license for use by another valid User.

If you wish to connect to a different Network License server, simply release the licenses you are currently using and click on the **Setup** link in the **Network Licensing Configuration** region of the view. The **Network Server Setup** dialog will appear, from where you can select from any other available Network License servers that have been detected.

Examining the License Usage

The current license usage can be checked in the *License Management* view (accessed by choosing the **Licensing** command under the **DXP** menu). In the **Available Licenses** region of the view, select the product of interest, then click the **+** symbol to display a list of users currently using a license.

	Product Name	Used	User Count	Expiry Date	Status
-	Unified Nexar/Protel Network License	-	1 / 15	1/06/2004	OK
	autotest1	-			
	Protel 2004 Network License	-	0 / 15	1/06/2004	OK
-	Nexar Full Suite Network License	In Use	1 / 15	1/06/2004	OK
	jhowie	-			
	CircuitStudio Full Suite Network License	-	0 / 1	1/06/2004	OK
	CAMtastic 2004 Network License	-	0 / 1	1/06/2004	OK

Figure 21. Examining License usage.

Revision History

Date	Version No.	Revision
29-Jan-2004	1.0	New product release
23-Mar-2005	1.1	Document renamed and modifications made in accordance with change to Altium Designer.

Software, hardware, documentation and related materials:

Copyright © 2005 Altium Limited.

All rights reserved. You are permitted to print this document provided that (1) the use of such is for personal use only and will not be copied or posted on any network computer or broadcast in any media, and (2) no modifications of the document is made. Unauthorized duplication, in whole or part, of this document by any means, mechanical or electronic, including translation into another language, except for brief excerpts in published reviews, is prohibited without the express written permission of Altium Limited. Unauthorized duplication of this work may also be prohibited by local statute. Violators may be subject to both criminal and civil penalties, including fines and/or imprisonment. Altium, Altium Designer, CAMtastic, Design Explorer, DXP, LiveDesign, NanoBoard, NanoTalk, Nexar, nVisage, CircuitStudio, P-CAD, Protel, Situs, TASKING, and Topological Autorouting and their respective logos are trademarks or registered trademarks of Altium Limited or its subsidiaries. All other registered or unregistered trademarks referenced herein are the property of their respective owners and no trademark rights to the same are claimed.